

THERMALUX®

NERC98DV (GQ-C2857WS-FF ET US) Series

Residential Condensing Tankless Water Heater Specification Sheet

- **Standard Input** - Gas consumption ranges from 16,000 BTU/h to 180,000 BTU/h
- **Capacity Range** - Flow rates from 0.5 gpm up to 9.8 gpm
- **Compact Design** - ANSI Z21.10.3/CSA 4.3 certified design that can be wall-mounted indoors or outdoors
- **Durable Steel Casing with Polyester Coating**
- **Heat Exchanger** - Manufactured with commercial grade copper, 25% thicker piping than standard models
- **Venting Options** - This Direct Vent model includes special plastic flue adapters that are compatible with both 3" or 4" Schedule 40 and 80 PVC/CPVC pipe. This model can also be converted to a non-direct vent (SV) model with the use of a Conversion Kit (#SV-CK-3)
- **Direct Electronic Ignition**
- **Quick-Connect** - Two identical units can be linked together by using the optional Quick Connect Cord (#QC-2) for twice the hot water capacity
- **Uniform Energy Factor (UEF)** - 0.91 (NG) / 0.91 (LP)
- **Temperature Controls** - Includes remote thermostat that can precisely adjust the output temperature from 115°F to 140°F with the capability to display temperatures in both °C and °F
- **Power Cord Installation Kit** - 6' power cord is included
- **Safety Devices** - Flame Sensor, Overheat Prevention Device, Lightning Protection Device, Freeze Protection, Condensate Overflow
- **Additional Features** - Temperature Lockout, High Elevation Adjustment, Condensate Overflow Monitoring System, Service Reminder Function, and New Scale Detection Function.
- **12-Year* Limited Heat Exchanger Warranty for Residential Use**
- **5-Year Limited Parts Warranty**
- **1-Year Reasonable Labor**
- **Approvals** - CSA, UPC**, NSF, Low NOx Approved by SCAQMD [$<14\text{ng/J}$ or 20ppm]



Model NERC98DV

☐ DV (Direct Vent)

Accessories

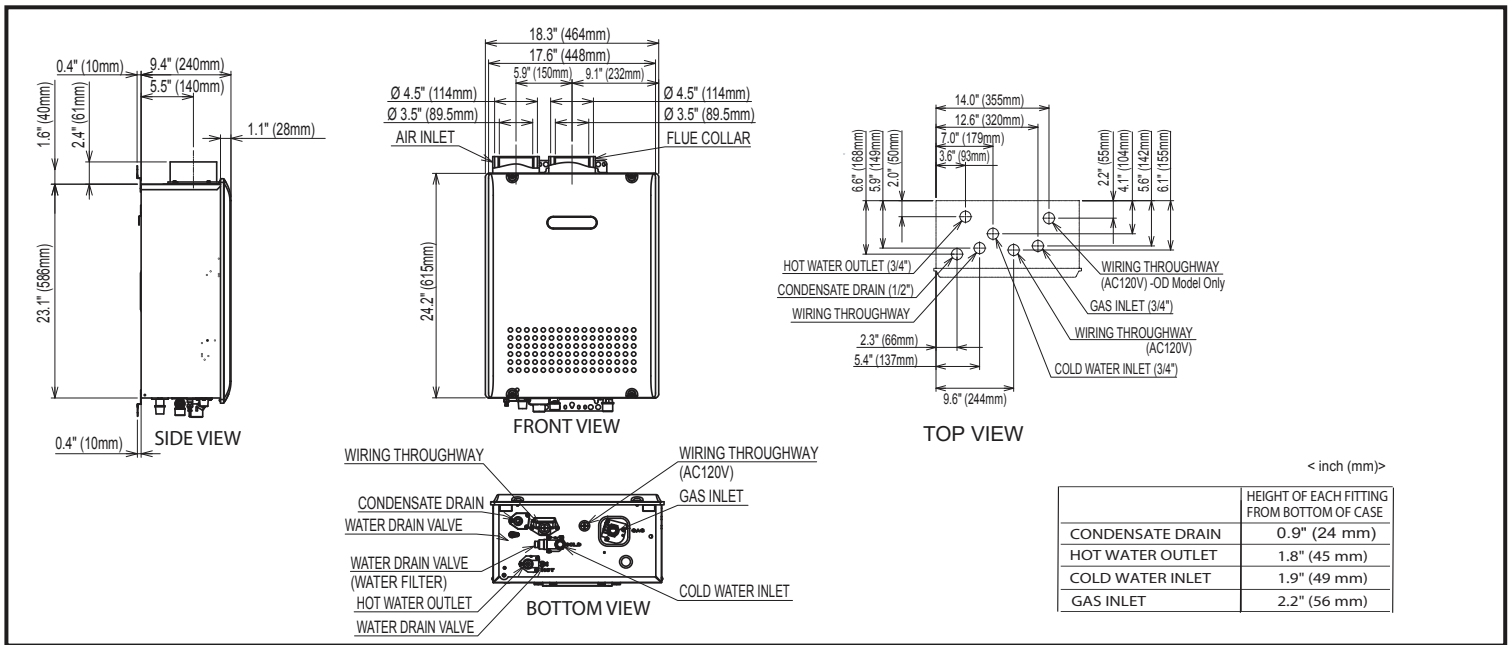
- ☐ Horizontal Hood Termination (#PVT-HL)
- ☐ 3" PVC Termination (#VK3-H-PVC)
- ☐ Birdscreen for 3" PVC/CPVC (#VT3-PVCS)
- ☐ Birdscreen for 4" PVC/CPVC (#VT4-PVCS)
- ☐ Condensate Neutralizer (#NC-1)
- ☐ Isolation Valves (#IK-WV-300-1-(SW / TH)-LF)
- ☐ Recess Box (#RB-900-1)
- ☐ Quick Connect Cord (#QC-2)



* Heat Exchanger warranty is maintained at 12 years or 6500 operational hours, whichever occurs first, when used in a single family dwelling in conjunction with a controlled recirculation system (an aquastat being the minimum pump control requirement) in accordance with the Installation Manual. Refer to the Noritz Limited Warranty for complete coverage details

** This product complies with California AB 1953 Low Lead Law and section 1417(d) of the Safe Drinking Water Act

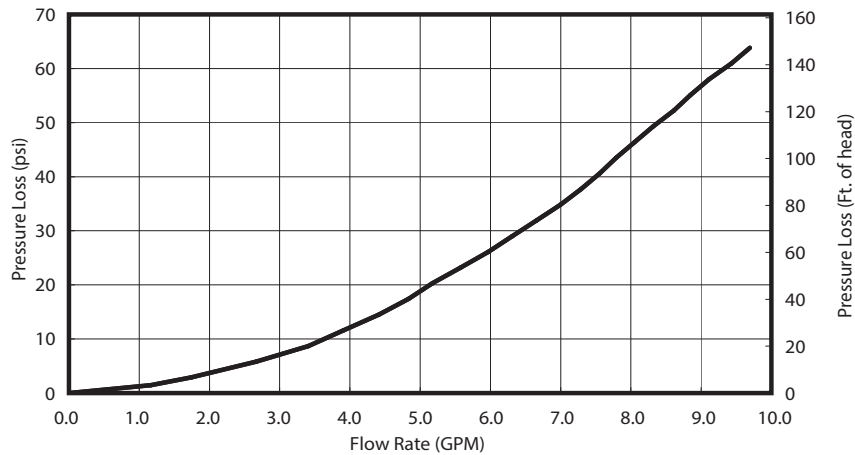
Dimensions



Flow Rates

Temperature Rise (°F)	30	40	45	50	60	70	80	90	100
Flow Rate (GPM)	9.8	8.4	7.5	6.7	5.6	4.8	4.2	3.7	3.4

Pressure Loss



Specifications

Model Name		NERC98DV (GQ-C2857WS-FF ET US)
Weight		58lb
Water Holding Capacity		0.5 Gallon (1.8 Liter)
Connection Sizes	Water Inlet	3/4"
	Hot Water Outlet	3/4"
	Gas Inlet	3/4"
	Condensate Drain	1/2"
Power	Supply	120VAC (60Hz), less than 4 amperes
	Consumption	NG:73W LP:78W Freeze Prevention 213W
Freeze Protection		-30°F
Temperature Settings	°F Mode	115-140°F (in 5°F intervals) (6 options)
	°C Mode	46, 47, 48, 50, 55, 60°C (6 options)
Default Temperature Options	°F Mode	120, 125, 130, 140°F (Default is 120°F)
	°C Mode	50, 52, 55, 60°C (Default is 50°C)